

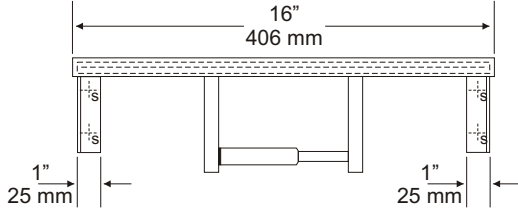
**U815-41 , U815-42
 SHELF AND
 TOILET TISSUE HOLDER**

JOB #:

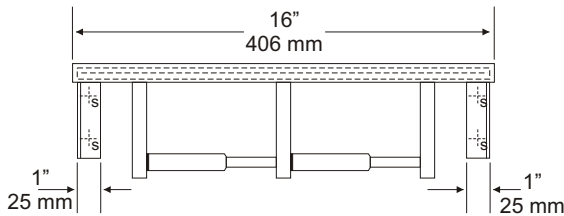
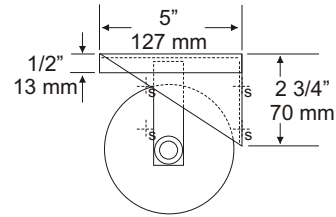
ITEM #:

QTY:

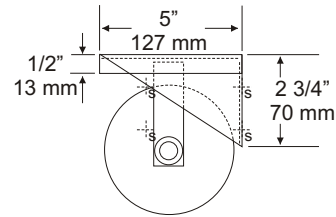
MOUNTING HANDING TYPE SIZE OTHER



U815-41



U815-42



SPECIFICATIONS:

Shelf: Fabricated of type 304 #18 gauge stainless steel with a #4 satin finish. Sides of shelf are bent down 1/2" with front edge bent down 1/2" along with 1/2" returns back for added rigidity and safety.

Brackets: Fabricated of type 304 #18 gauge stainless steel formed for maximum strength.

Toilet Tissue Dispenser: Fabricated of type 304 #22 gauge stainless steel with a bright polished finish.

Rollers: High impact, chrome plated ABS that is spring loaded.

Flip Top Ashtray:(U816) Fabricated of type 304 #18 gauge stainless steel with a #4 satin finish hinged to top of shelf.

U815-41: Surface Mounted Shelf/Single Roll Disp.

Overall Size: 16"W x 4"H x 5"D
 406mm x 102mm x 127mm

Capacity: One standard roll up to 5 1/4" OD

U816-41: Same as U815-41 with flip top ash tray.

U815-42: Same as U815-41 with double roll capacity.

U816-42: Same as U816-41 with double roll capacity.

Options: U007 Theft resistant spindles. One required per roll.

INSTALLATION:

Place unit against mounting surface. Making sure unit is level, transfer mounting point locations and drill pilot holes. Secure with proper fasteners per each application. Install toilet tissue rolls.

APPLICATION:

To provide a stainless steel shelf with toilet tissue dispenser, with a flip top ash tray version.

