

U945H

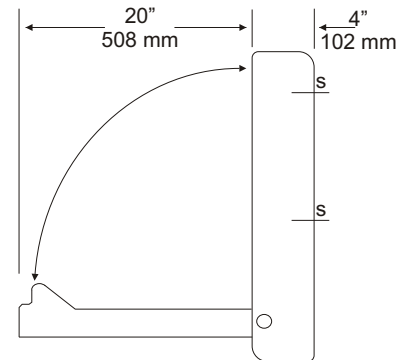
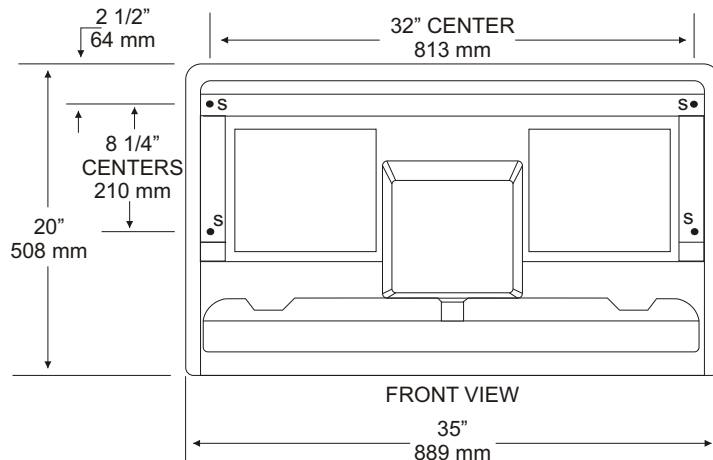
HORIZONTAL CHANGING STATION

SURFACE MOUNTED

JOB #:

Item:

QTY:



SPECIFICATIONS:

Body: Fabricated of high impact ABS polyethylene with radius leading edges that prevent injury. Material is odor resistant and easy to clean and available in cream or grey.

Base is concave formed to allow safe and easy changing. Molded graphics and brail comply with ADA code.

Liner Dispenser: An integral part of body that is standard with each unit.

Gas Shocks: Concealed gas spring actuators ensure a safe and smooth open and close motion.

Safety Straps: Snap lock fasteners to hold child securely in place.

U945H: Horizontal Changing Station

Overall Size: 35"W x 20"H x 4"D (closed)
889mm x 508mm x 102mm
24"D (open) 610mm

**Unit can be semi-recessed 1 3/4"D (45mm)*

**Maintain a static load of 400 lbs.*

Verify Color Required: Cream _____

Grey _____

INSTALLATION:

Coordinate installation with architect or contractor to avoid interference with surrounding objects. Hold unit up to wall and open to verify there are no obstructions to interfere with operation of station. Transfer mounting point locations to wall surface and drill pilot holes. Secure unit with proper fasteners for each application. *(Recommend a qualified carpenter to install unit)*

Unit can be lowered with one hand and into position with less than 5 lbs of force, without turning or twisting of wrist.

Verify with local codes and type approach (forward or side) for proper mounting height above finished floor.

APPLICATION:

To provide a surface mounted, retractable changing station. Unit can be semi-recessed into the wall when full surface mounting is not possible.

