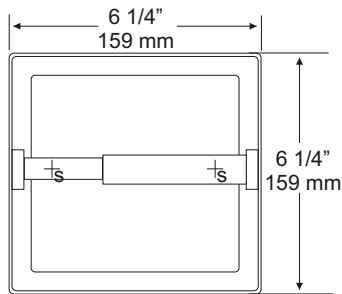


**UX70, UX75
 TOILET TISSUE HOLDER
 RECESSED**

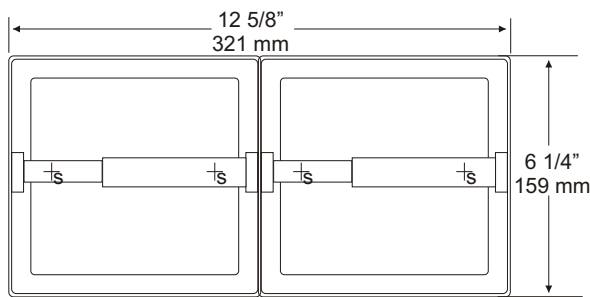
JOB #:

Item:

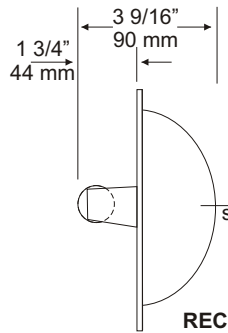
QTY:



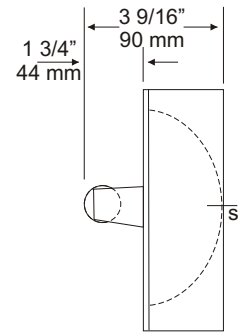
UX70



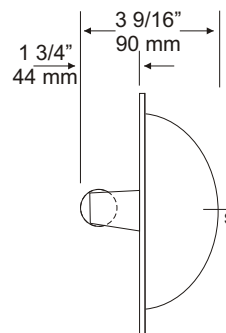
UX75



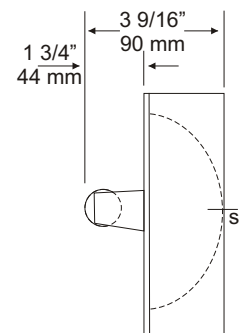
RECESSED



SURFACE



RECESSED



SURFACE

SPECIFICATIONS:

All UX bath accessories series are fabricated of type 304 stainless steel with a bright finish.

Shell and Flange: Drawn one piece construction fabricated of #22 ga stainless steel with a bright finish. Two mounting points allow unit to be secured to mounting clamps or framing in wall opening.

Support Posts: Heavy duty cast zamack with bright chrome finish to match shell.

Spindle: Spring loaded, chrome plated plastic roller.

Collars: Type 304 #22 ga stainless steel finished to match unit.

UX70: Recessed Single Roll Dispenser

Overall Size: 6 1/4"W x 6 1/4"H x 3 9/16"D
 159mm x 159mm x 92mm

Wall Opening: 5 1/4"W x 5 1/4"H x 2"D
 133mm x 133mm x 51mm

UX70-SM: Surface Mounted Single Roll Dispenser

UX75: Recessed Dual Roll Dispenser.

Overall Size: 12 5/8"W x 6 1/4"H x 3 9/16"D
 321mm x 159mm x 92mm

Wall Opening: 11 3/4"W x 5 1/4"H x 2"D
 298mm x 133mm x 51mm

UX75-SM: Surface Mounted Dual Roll Dispenser

Optional: U007-Theft Resistant Spindle.

INSTALLATION:

Provide a wall opening at desired or specified area and coordinate with architect or contractor to avoid interference with pipes, vents etc... In wall. **See specification for proper wall openings.** Secure unit in wall opening with proper fasteners and clamps per application. Insert roller into roll core depress one side and install on posts.

Mounting Clamps:

A Clamp: Applicable where backing or framing is not available. Used on existing walls.

B Clamp: Conventional type, secured to back side of front wall. (Used on UX70)

B-1 Clamp: Same as B-Clamp for UX75.

C Clamp: For cement, mortar or mud-in installations. (Tile)

APPLICATION:

To provide a single or dual recessed toilet tissue dispenser with a bright finish. Ideal for overnight stay facility applications.

